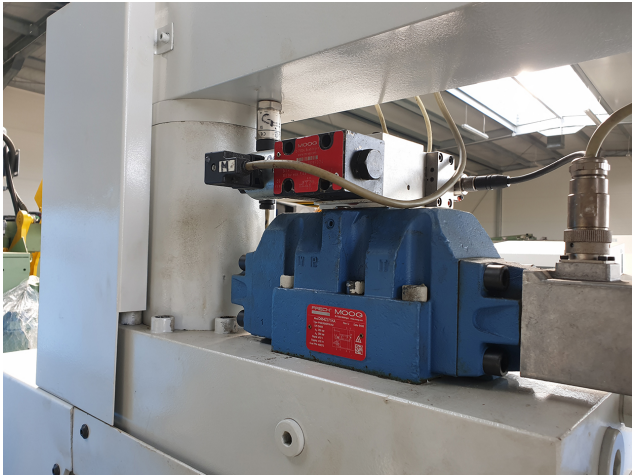


Reconditioning of MOOG main stage & servo valve



manufacturer :
partnership

Product number:
RS2010

Description

The valves received for repair are subjected to an initial inspection to determine the extent of repair required.

Incoming inspection

MOOG-HYDROLUX main stage

- condition of the piston (piston friction)
- electronics output
- position of the displacement transducer
- electronics with displacement transducer
- O-rings and seal rings

MOOG pilot stage

- condition of the filters
- beam splitter
- oil quality
- clearance between piston and bushings
- electronics with displacement transducer
- O-rings
- control behaviour in the small-signal range
- zero setting
- condition of the nozzles

isolation valve

- O-ring

After approval of the repair order, the required services are carried out and documented. Finally, a functional test is carried out with diagram creation and evaluation.